

Design:

- Hollow taper shank in accordance with DIN 69893 Form F
- Manufactured in hardened and tempered tool steel
- Surface bright polished
- For bore tolerances H6 or H7
- Cutter tightening bolt with double thread

Application

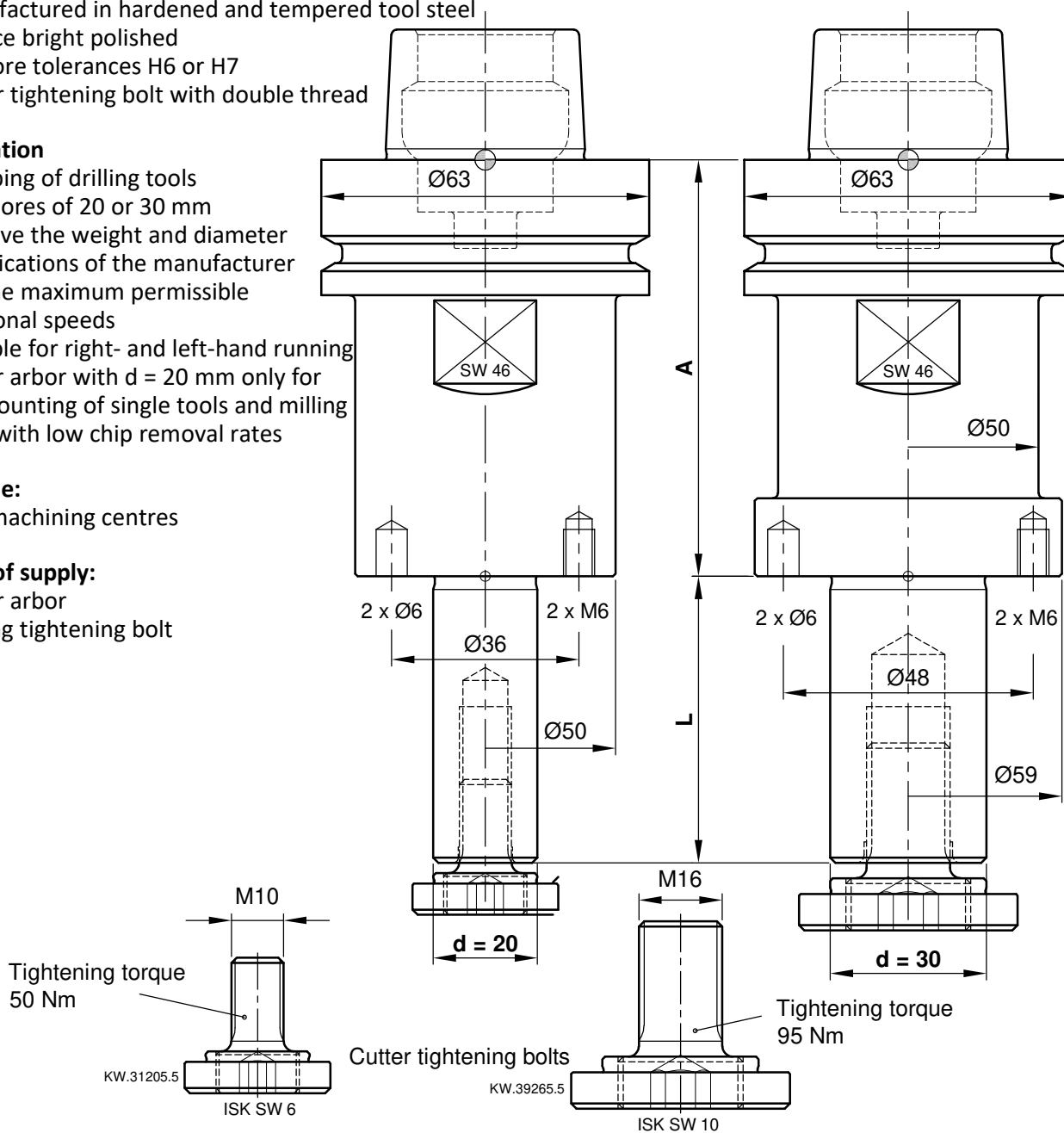
- Clamping of drilling tools with bores of 20 or 30 mm
- Observe the weight and diameter specifications of the manufacturer and the maximum permissible rotational speeds
- Suitable for right- and left-hand running
- Cutter arbor with d = 20 mm only for the mounting of single tools and milling work with low chip removal rates

Machine:

- CNC machining centres


Scope of supply:

- Cutter arbor
- Cutting tightening bolt



A	d	L	MA	ME	n max.	Ident-No.
80	20	55		1.6	24000	C905-8020055
80	20	70		1.7	24000	C905-8020070
80	20	80		1.7	24000	C905-8020080
80	30	55		2	24000	C905-8030055
80	30	80		2.1	24000	C905-8030080
80	30	100		2.2	24000	C905-8030100

Spare Parts				
Description	Qty.	Dimensions	MBM	Ident-No.
Cutter tightening bolt d=20	1	M10x26	1	KW.31205.5
Cutter tightening bolt for d=30	1	M16x36	1	KW.39265.5

 <p>e-mail:office@aigner-werkzeuge.at www.aigner-werkzeuge.at</p>	MA.....Machine Manufacturer ME.....Weight (kg)	Blattformat: A4 <small>All dimensions in mm</small> Zchnng.-Nr. KW.49050.4 02
	n max.....Maximum Rotational Speed (rpm)	C905-80

With a recess for a Reichenbach pick-up

Design:

- Hollow taper shank in accordance with DIN 69893 Form F
- Manufactured in hardened and tempered tool steel
- Surface bright polished
- For bore tolerances H6 or H7
- Cutter tightening bolt with double thread
- Alternatively, cutter arbor C905-80 can also be used

Application:

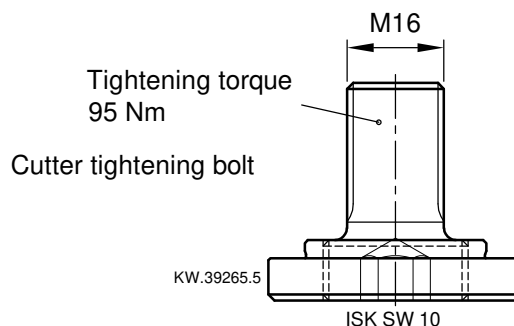
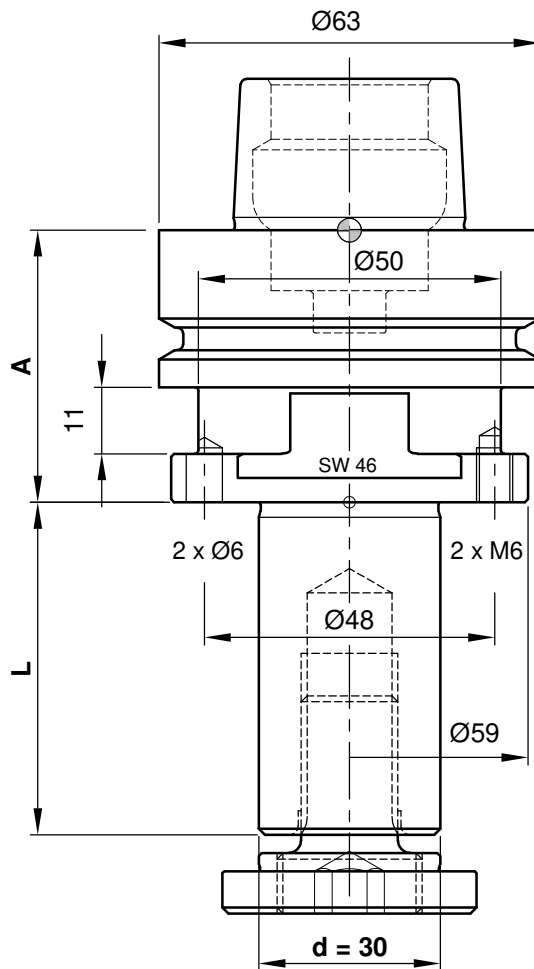
- Clamping of drilling tools with bores of 30 mm
- Observe the weight and diameter specifications of the manufacturer and the maximum permissible rotational speeds
- Suitable for right- and left-hand running

Machine:

- CNC machining centres


Scope of supply:

- Cutter arbor
- Cutting tightening bolt



A	d	L	MA	ME	n max.	Ident-No.
45	30	55	Reichenbacher	1.5	24000	C905-E4530055
45	30	80	Reichenbacher	1.6	24000	C905-E4530080
45	30	100	Reichenbacher	1.7	24000	C905-E4530100
45	30	140	Reichenbacher	1.8	24000	C905-E4530140

Spare Parts				
Description	Qty.	Dimensions	MBM	Ident-No.
Cutter tightening bolt for d=30	1	M16x36	1	KW.39265.5

 <p>e-mail:office@aigner-werkzeuge.at www.aigner-werkzeuge.at</p>	MA.....Machine Manufacturer	Blattformat: A4 <small>All dimensions in mm</small>
	ME.....Weight (kg)	Zchng.-Nr. KW.49050.4 02
n max.....Maximum Rotational Speed (rpm)	C905-E	

Design:

- Hollow taper shank in accordance with DIN 69893 Form F
- Manufactured in hardened and tempered tool steel
- Surface bright polished
- For bore tolerances H6 or H7
- Cutter tightening bolt with double thread

Application:

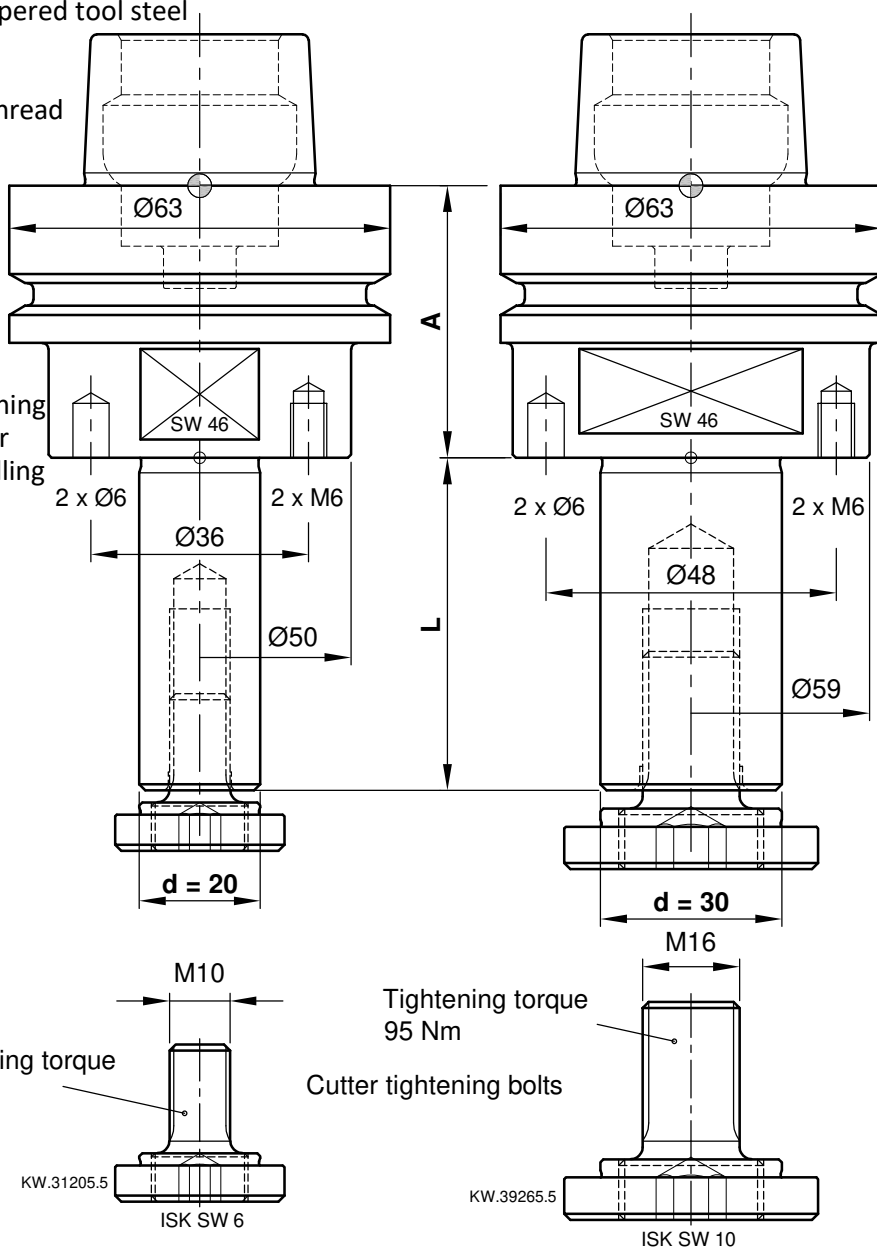
- Clamping of drilling tools with bores of 20 or 30 mm
- Observe the weight and diameter specifications of the manufacturer and the maximum permissible rotational speeds
- Suitable for right- and left-hand running
- Cutter arbor with d = 20 mm only for the mounting of single tools and milling work with low chip removal rates

Machine:

- CNC-Bearbeitungszentren


Scope of supply:

- Cutter arbor
- Cutting tightening bolt



A	d	L	MA	ME	n max.	Ident-No.
45	20	55		1.1	24000	C905-4520055
45	20	80		1.2	24000	C905-4520080
45	30	55		1.5	24000	C905-4530055
45	30	80		1.6	24000	C905-4530080
45	30	100		1.7	24000	C905-4530100
45	30	120		1.8	24000	C905-4530120
45	30	140		1.8	24000	C905-4530140
45	30	180		2.0	24000	C905-4530180

Spare Parts				
Description	Qty.	Dimensions	MBM	Ident-No.
Cutter tightening bolt d=20	1	M10x26	1	KW.31205.5
Cutter tightening bolt für d=30	1	M16x36	1	KW.39265.5

 <p>e-mail:office@aigner-werkzeuge.at www.aigner-werkzeuge.at</p>	MA.....Machine Manufacturer ME.....Weight (kg)	Blattformat: A4 <small>All dimensions in mm</small> Zchnng.-Nr. KW.49050.4 02
	n max.....Maximum Rotational Speed (rpm)	C905-45