

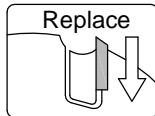
# PM-Ball-Head-End-Mill

C830

Cutting Material  
**TC**

Number of Teeth  
**Z 2**

Feed  
**MEC**



**Design:**

- Tool body in Q & T steel
- Shank fit h6
- TC profile cutter with chip groove

**Application:**

- Generation of segmental or semi-circular circular relief structures or mouldings
- Face milling and finish milling of round or oval mouldings or contours

**Workpiece material:**

- Solid wood and panel materials

**Machine:**

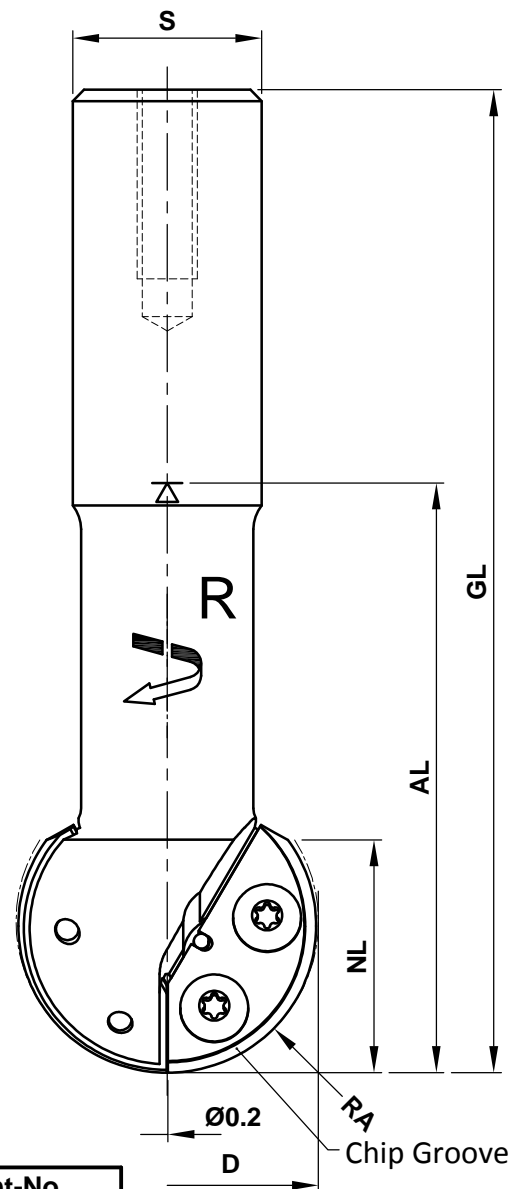
- CNC machining centres

**Scope of supply:**

- Tool body including profile cutter
- Key with handle Torx T15
- Principally with a length setting screw:  
For use with shrink chucks HSK-F 63 (C915) without a length setting screw
- Also optionally assembled (and balanced) (MS):  
Assembled in shrink chuck HSK-F 63 (C915): C830-....-M1  
Assembled in collet chuck HSK-F 63 (C910): C830-....-M2

**Special features:**

- Z2 design up to the centre
- Profile cutter with chip flute design for the generation of improved workpiece surfaces



| D   | RA   | NL | AL | GL  | S  | Z   | R/L | n max. | Ident-No.    |
|-----|------|----|----|-----|----|-----|-----|--------|--------------|
| 40  | 20   | 30 | 78 | 130 | 25 | 2   | R   | 18500  | C830-200078R |
| 45  | 22.5 | 27 | 83 | 135 | 25 | 2   | R   | 17000  | C830-225083R |
| 50  | 25   | 39 | 83 | 135 | 25 | 2   | R   | 16500  | C830-250083R |
| 60  | 30   | 41 | 88 | 140 | 25 | 2   | R   | 15500  | C830-300088R |
| 80  | 40   | 45 | 78 | 130 | 25 | 2+2 | R   | 14000  | C830-400078R |
| 100 | 50   | 60 | 70 | 122 | 25 | 2+2 | R   | 12000  | C830-500070R |

| Spare Parts           |      |                         |     |                |
|-----------------------|------|-------------------------|-----|----------------|
| Description           | Qty. | Dimensions              | MBM | Ident-No.      |
| Profile Cutter R20    | 2    | 35x16x2                 | 2   | PM.47205.5/U20 |
| Profile Cutter R22.50 | 2    | 35x16x2                 | 2   | PM.47206.5/U20 |
| Profile Cutter R25    | 2    | 50x20x2                 | 2   | PM.47207.5/U20 |
| Profile Cutter R30    | 2    | 50x20x2                 | 2   | PM.47208.5/U20 |
| Profile Cutter R40    | 2    | 35x16x2                 | 2   | PM.47209.5/U20 |
|                       | 2    | 35x18x2                 | 2   | PM.47210.5/U35 |
| Profile Cutter R50    | 2    | 50x18x2                 | 2   | PM.47283.5/U20 |
|                       | 2    | 40x19x2                 | 2   | PM.47284.5/U35 |
| Round Headed Screw    | 2    | M4x6 (head D9) Torx T15 | 10  | KW.44237.5     |

**Aigner**  
WERKZEUGE  
e-mail:office@aigner-werkzeuge.at  
www.aigner-werkzeuge.at

MS.....Machine Adaptor  
Z.....No. of teeth  
n max.....Maximum Rotational Speed (rpm)  
MBM.....Minimum Order Quantity

Blattformat: **A4** All dimensions in mm  
Zchnng.-Nr. KW.48300.4 | 00

**C830**