

Design:

- Hollow taper shank in accordance with DIN 69893 HSK-E 63
- Manufactured in hardened and tempered tool steel
- Surface bright polished
- For bore tolerances H6 or H7
- Cutter clamping screw with double thread

Application:

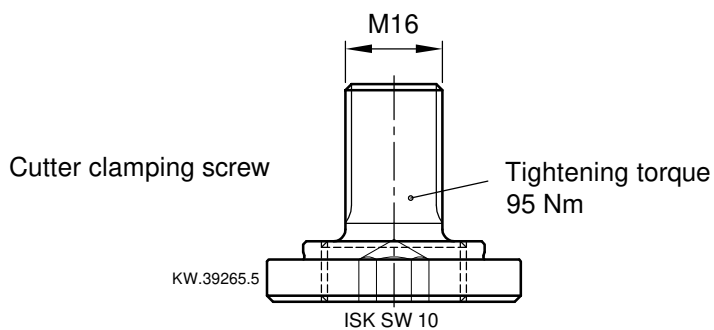
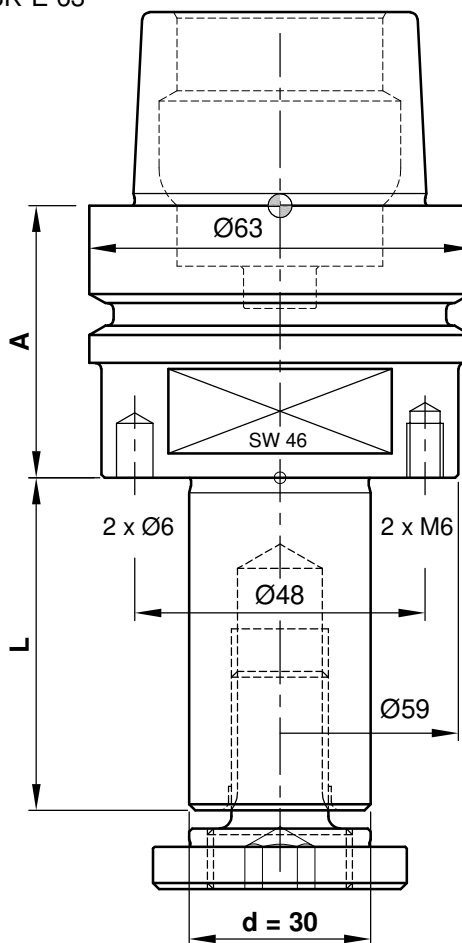
- The clamping of drilling tools
30mm bore
- Observe the weight and diameter specifications of the machine manufacturer and the maximum permissible rotational speed
- Suitable for clockwise and anti-clockwise running

Machine:

- CNC machining centres


Scope of supply:

- Cutter arbor
- Cutter clamping screw



A	d	L	ME	n max.	Ident-No.
45	30	55	1.5	24000	C805-4530055
45	30	80	1.6	24000	C805-4530080
45	30	100	1.7	24000	C805-4530100
45	30	140	1.8	24000	C805-4530140

Spare parts				
Description	Qty.	Dimensions	MBM	Ident-No.
Cutter clamping screw	1	M16x36	1	KW.39265.5

 <p>e-mail:office@aigner-werkzeuge.at www.aigner-werkzeuge.at</p>	ME.....Weight (kg)	Blattformat: A4 <small>All dimensions in mm</small>
	n max.....Max. Speed (rpm)	
		C805-45

Design:

- Hollow taper shank in accordance with DIN 69893 HSK-E 63
- Manufactured in hardened and tempered tool steel
- Surface bright polished
- For bore tolerances H6 or H7
- Cutter clamping screw with double thread

Application:

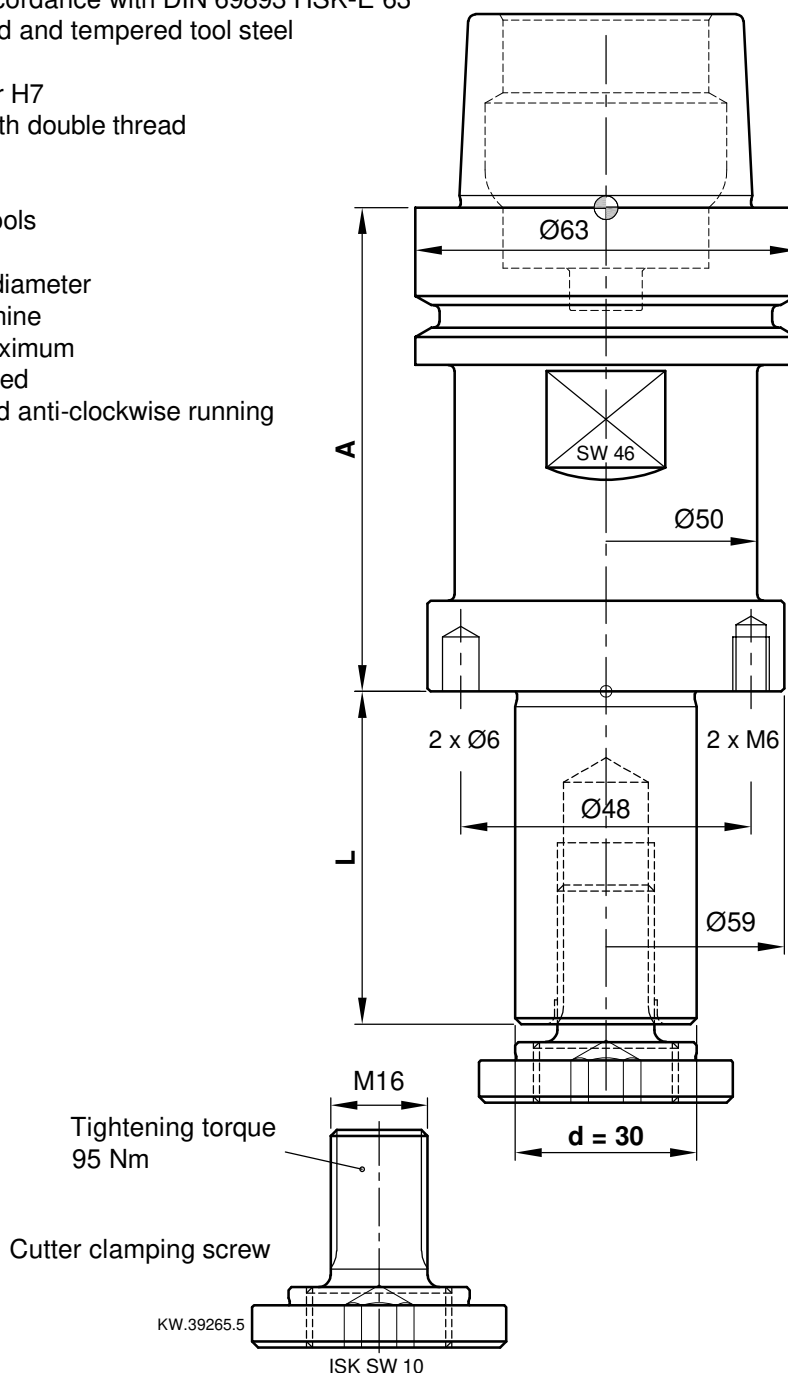
- The clamping of drilling tools
30mm bore
- Observe the weight and diameter specifications of the machine manufacturer and the maximum permissible rotational speed
- Suitable for clockwise and anti-clockwise running

Machine:

- CNC machining centres


Scope of supply:

- Cutter arbor
- Cutter clamping screw



A	d	L	ME	n max.	Ident-No.
80	30	55	2.0	24000	C805-8030055
80	30	80	2.1	24000	C805-8030080
80	30	100	2.2	24000	C805-8030100

Spare parts				
Description	Qty.	Dimensions	MBM	Ident-No.
Cutter clamping screw	1	M16x36	1	KW.39265.5

 <p>e-mail:office@aigner-werkzeuge.at www.aigner-werkzeuge.at</p>	ME.....Weight (kg)	Blattformat: A4 <small>All dimensions in mm</small>
	n max.....Max. Speed (rpm)	
		C805-80