

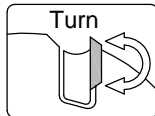
# WM-Shank-Roughing-Cutter

C364

Cutting Material  
**TC**

Number of Teeth  
**Z1+1**

Feed  
**MEC**



**Design:**

- Tool body in steel
- With TC boring cutter
- Z1+1 in two chip grooves  
4 or 6 spirally arranged TC indexable inserts
- Shank fit h6

**Application:**

- Grooving, jointing, rebating, sizing (cutting off)  
For feed rates up to 15 m/min

**Workpiece Material:**

- Solid wood and panel materials

**Machine:**

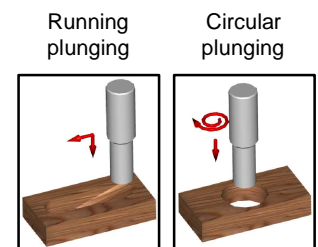
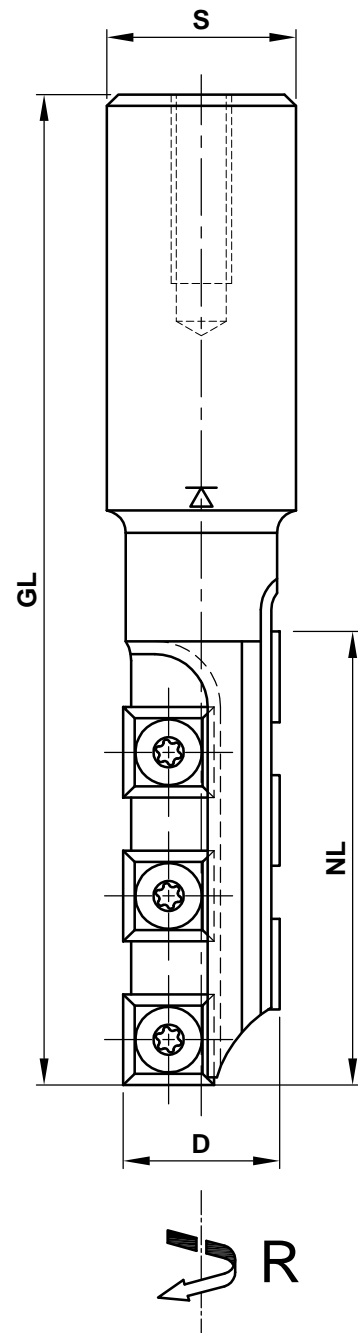
- CNC machining centres

**Scope of Supply:**

- Tool body incl. indexable cutters
- Principally with a length adjustment screw;  
With use in shrink chuck HSK-F 63 (C915)  
without a length adjusting screw
- Key with handle Torx T15
- Optionally also assembled (and balanced) (MS):  
Assembled in shrink chuck HSK-F 63 (C915): C364-.....-M1  
Assembled in collet chuck HSK-F 63 (C910): C364-.....-M2

**Special Features:**

- Standard indexable inserts fitted



D	NL	GL	S	Z	R/L	n max.	Ident-No.
22	42	115	25	1+1	R	24000	C364-2242R
22	60	131	25	1+1	R	24000	C364-2260R

Spare Parts		Qty.	Dimensions	MBM	Ident-No.
Circumference cutter		4/6	12x12x1.5	10	WMF12x12/U
Screw circumference cutter.		4/6	M4x6 (head D9) Torx T15	10	KW.44237.5

<p>e-mail:office@aigner-werkzeuge.at www.aigner-werkzeuge.at</p>	MS.....Machine Adaptor	Blattformat: <b>A4</b>	<small>All dimensions in mm</small> Zchnng.-Nr. KW.43640.4   00
	Z.....No. of Teeth	<b>C364</b>	
n max.....Max. Speed (rpm)			
MBM.....Minimum Order Quantity			