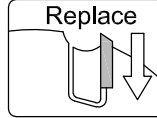
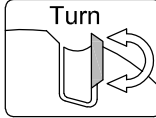


PM-Rounding/Bevelling/Joining-Cutter-Set (R2-R5)/(R6-R10) C292

Cutting Material
TC

Number of Teeth
Z 2

Feed
MEC



Design:

- Tool body in light alloy
- 2-piece cutter set
- No. of teeth 2
- TC reversible knife
- TC profile knife

Application:

- For jointing and simultaneous rounding / bevelling of solid wood on CNC moulders

Workpiece material:

- Solid wood

Machine:

- CNC machining centres

Scope of supply:

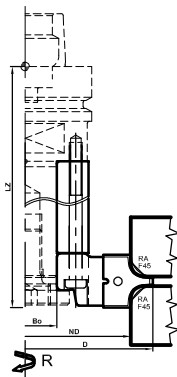
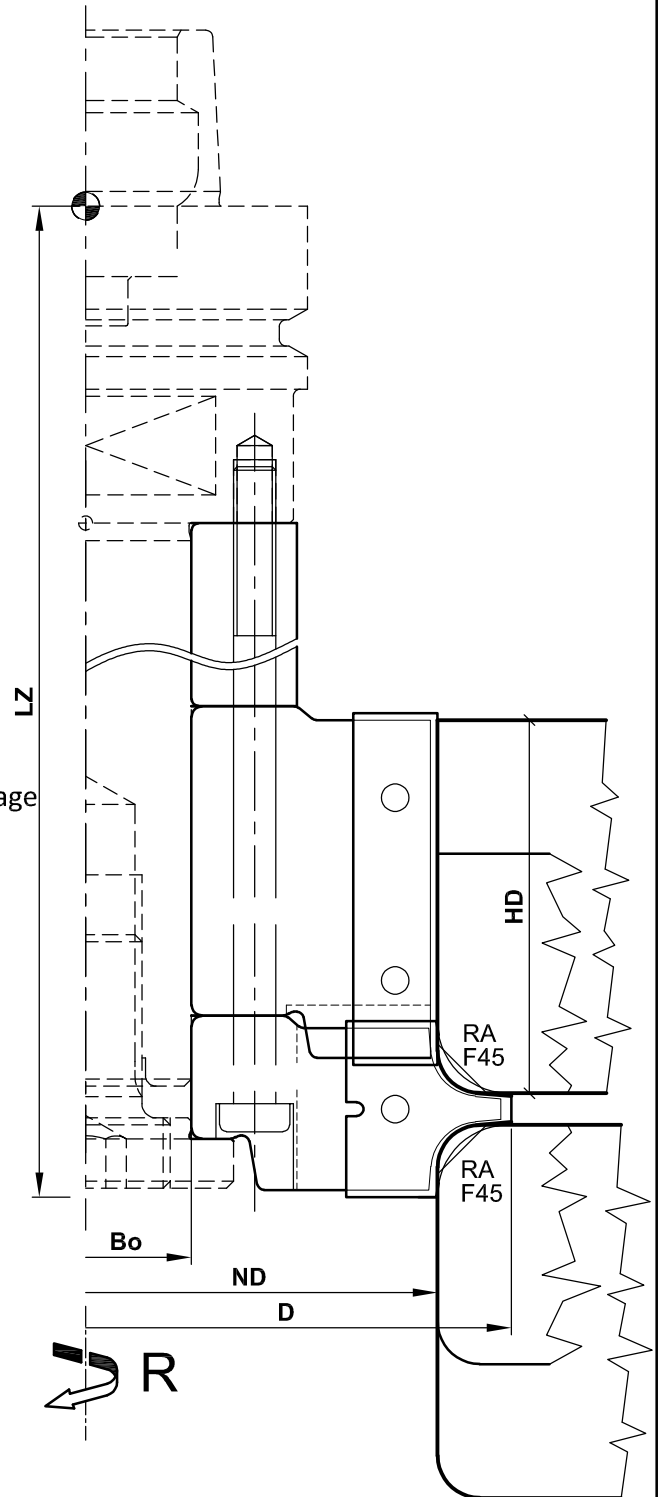
- Tool body including knives
- C292-2550/PM.27255.5/U35 R2 pre-assembled
- C292-2560/PM.27255.5/U35 R2 pre-assembled
- C292-61050/PM.27260.5/U35 R6 pre-assembled
- C292-61060/PM.27260.5/U35 R6 pre-assembled
- If other cutters are to be fitted this must be stated at the time of ordering
- The possible profile cutters can be seen on the following page
- Also optionally assembled (and balanced) (MS):
Assembled on a milling arbor HSK-F 63 (C905-4530080): C292-...-F1
Assembled on a milling arbor HSK-F 63 (C905-8030080): C292-...-F2
- 1 key with handle Torx T40
- 1 key with handle Torx T25
- 1 aluminium distance ring

Special features:

- Same zero diameter (edge rounding) for all radii
- Various radii possible

Additional Information:

- Also available as rounding/chamfering cutter (without jointing cutter)



Aigner
WERKZEUGE
e-mail:office@aigner-werkzeuge.at
www.aigner-werkzeuge.at

MS.....Machine Adaptor


Blattformat: **A4** All dimensions in mm
Zchnng.-Nr. KW.42920.4 | 00

C292

PM-Rounding/Bevelling/Jointing-Cutter-Set (R2-R5)/(R6-R10) C292

| D | ND | HD | Bo | LZ | Z | R/L | G | P | n max. | Ident-No. |
|-----|-----|----|----|-------|---|-----|------------|----|--------|---------------|
| 112 | 100 | 49 | 30 | | 2 | R | R2-R5/F45 | R2 | 12300 | C292-2550 |
| 112 | 100 | 49 | 30 | 138.5 | 2 | R | R2-R5/F45 | R2 | 12300 | C292-2550-F1 |
| 112 | 100 | 49 | 30 | 174.5 | 2 | R | R2-R5/F45 | R2 | 12300 | C292-2550-F2 |
| 112 | 100 | 59 | 30 | | 2 | R | R2-R5/F45 | R2 | 12300 | C292-2560 |
| 112 | 100 | 59 | 30 | 138.5 | 2 | R | R2-R5/F45 | R2 | 12300 | C292-2560-F1 |
| 112 | 100 | 59 | 30 | 174.5 | 2 | R | R2-R5/F45 | R2 | 12300 | C292-2560-F2 |
| 121 | 100 | 53 | 30 | | 2 | R | R6-R10/F45 | R6 | 11300 | C292-61050 |
| 121 | 100 | 53 | 30 | 140.8 | 2 | R | R6-R10/F45 | R6 | 11300 | C292-61050-F1 |
| 121 | 100 | 53 | 30 | 174.8 | 2 | R | R6-R10/F45 | R6 | 11300 | C292-61050-F2 |
| 121 | 100 | 63 | 30 | | 2 | R | R6-R10/F45 | R6 | 11300 | C292-61060 |
| 121 | 100 | 63 | 30 | 140.8 | 2 | R | R6-R10/F45 | R6 | 11300 | C292-61060-F1 |
| 121 | 100 | 63 | 30 | 175.8 | 2 | R | R6-R10/F45 | R6 | 11300 | C292-61060-F2 |
| 112 | 100 | | 30 | | 2 | R | R2-R5/F45 | R2 | 12300 | C292-25 |
| 112 | 100 | | 30 | 114 | 2 | R | R2-R5/F45 | R2 | 12300 | C292-25-F1 |
| 112 | 100 | | 30 | 149 | 2 | R | R2-R5/F45 | R2 | 12300 | C292-25-F2 |
| 121 | 100 | | 30 | | 2 | R | R6-R10/F45 | R6 | 11300 | C292-610 |
| 121 | 100 | | 30 | 114.3 | 2 | R | R6-R10/F45 | R6 | 11300 | C292-610-F1 |
| 121 | 100 | | 30 | 149.3 | 2 | R | R6-R10/F45 | R6 | 11300 | C292-610-F2 |

| Spare Parts | | | | |
|------------------------------------|------|-----------------------------|-----|----------------|
| Description | Qty. | Dimensions | MBM | Ident-No. |
| Reversible knife for C292-2550 | 2 | 50x12x1.5 | 10 | WMF50x12/U |
| Reversible knife for C292-2560 | 2 | 60x12x1.5 | 10 | WMF60x12/U |
| Reversible knife for C292-61050 | 2 | 50x12x1.5 | 10 | WMF50x12/U |
| Reversible knife for C292-61060 | 2 | 60x12x1.5 | 10 | WMF60x12/U |
| Profile knife R2 | 2 | 20x20x2.0 | 2 | PM.27255.5/U35 |
| Profile knife R3 (option) | 2 | 20x20x2.0 | 2 | PM.27256.5/U35 |
| Profile knife R4 (option) | 2 | 20x20x2.0 | 2 | PM.27257.5/U35 |
| Profile knife R5 (option) | 2 | 20x20x2.0 | 2 | PM.27258.5/U35 |
| Profile knife bevel 5x45° (option) | 2 | 20x20x2.0 | 2 | PM.27259.5/U35 |
| Profile knife R6 | 2 | 25x25x2.0 | 2 | PM.27260.5/U35 |
| Profile knife R7 (option) | 2 | 25x25x2.0 | 2 | PM.27261.5/U35 |
| Profile knife R8 (option) | 2 | 25x25x2.0 | 2 | PM.27262.5/U35 |
| Profile knife R9 (option) | 2 | 25x25x2.0 | 2 | PM.27263.5/U35 |
| Profile knife R10 (option) | 2 | 25x25x2.0 | 2 | PM.27264.5/U35 |
| Profile knife bevel 7x45° (option) | 2 | 25x25x2.0 | 2 | PM.27265.5/U35 |
| Screw main knife joint | 4 | Grub screw ISO 4028 M8x16 | 10 | KW.44253.5 |
| Screw main knife profile | 2 | Socket head screw T40 M8x21 | 10 | KW.09697.5 |
| Screw main knife profile | 2 | Allen screw M4x6 | 10 | KW.44249.5 |

| | | |
|--|--|---|
|  <p>e-mail:office@aigner-werkzeuge.at www.aigner-werkzeuge.at</p> | LZ..Overall Length (Z dimension) Z..No. of teeth G.....Size I P.....Profile Variant | Blattformat: A4 <small>All dimensions in mm</small> Zchnng.-Nr. KW.42920.4 00 |
| | n max.....Maximum Rotational Speed (rpm) MBM.....Minimum Order Quantity | C292-1 |