

**Design:**

- Made of steel with shank fit h6 suitable for shrink-fitting

**Application:**

- For standard saws with bore according to C276-E:  
C276-E26.....clockwise  
C276-E27.....counterclockwise
- Observe the mass diameter specification of the machine manufacturer as well as the permissible maximum rotational speed
- For saw blades up to Ø 200 mm.
- For blade thickness from 2.2 - 3.8 mm
- STB 2.2 - 3.6 with spacer ring
- From STB 3.7 use without spacer ring

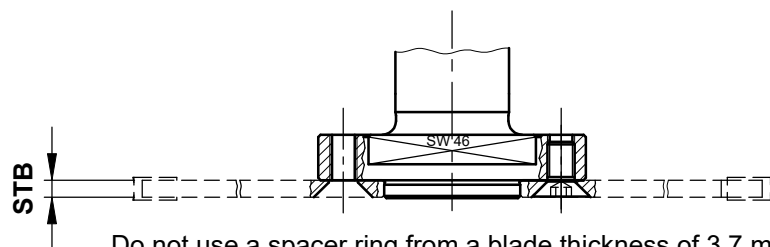
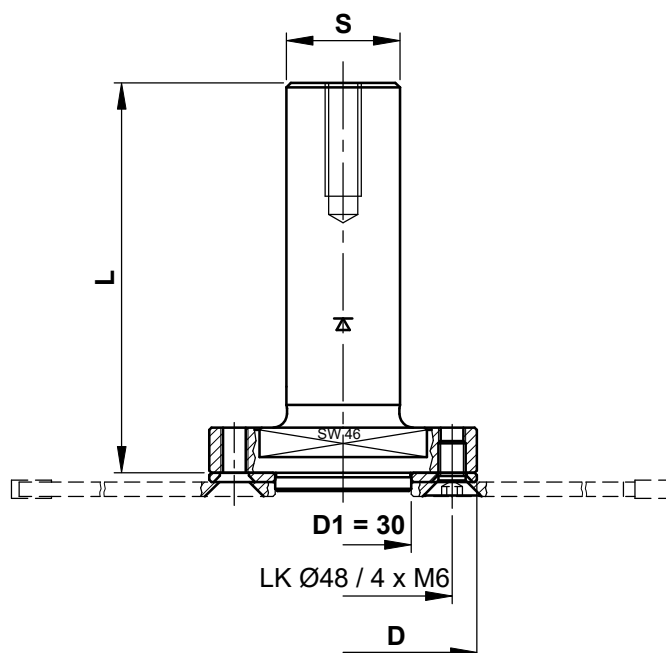
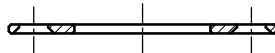
**Machine:**

- CNC machining centres

**Scope of delivery:**

- Saw blade holder  
incl. spacer ring and screws

Spacer ring 2.0  
KW.96701.4



D	D1	L	S	Ident-No.
59	30	86	25	C277-E86S

**Spare Parts**

Description	Qty.	Dimensions	MBM	Ident-No.
Spacer ring 2mm with countersink	1	59x30x2.0	1	KW.96701.4
Screw	4	Countersunk Screw M6x12	10	KW.45445.5

**Aigner**  
WERKZEUGE  
e-mail: office@aigner-werkzeuge.at  
www.aigner-werkzeuge.at

STB.....Saw log  
MBM.....Minimum Order Quantity

Blattformat: **A4** all dimensions in mm  
Zchnng.-Nr. KW.42770.4 | 00

**C277-E**