

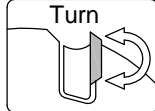
WM-Shank Grooving Cutter

C259

Cutting Material
TC

Zähnezahl
Z2+Z1

Feed
MEC



Design:

- Tool body in Q & T steel
- Zähnezahl = 2+1
- TC reversible blade as a plunging edge
- Axial parallel cutting (reversible blade)
- Shank fit h6

Application:

- Grooves, joints, rebates and sizing (cut-off milling)
- Slight step visible in the workpiece (transition Z2/Z1)
- Finishing pass; constant tool diameter

Workpiece material:

- Solid wood and panel materials

Machine:

- CNC machining centres

Scope of supply:

- Tool body including reversible blades
- Torx key T15
- Principally with a length setting screw:
For use with shrink chucks HSK-F 63 (C915)
without a length setting screw
- Also optionally assembled (and balanced) (MS):
Assembled in shrink chuck HSK-F 63 (C915): C259-....-M1
Assembled in collet chuck HSK-F 63 (C910): C259-....-M2

Special features:

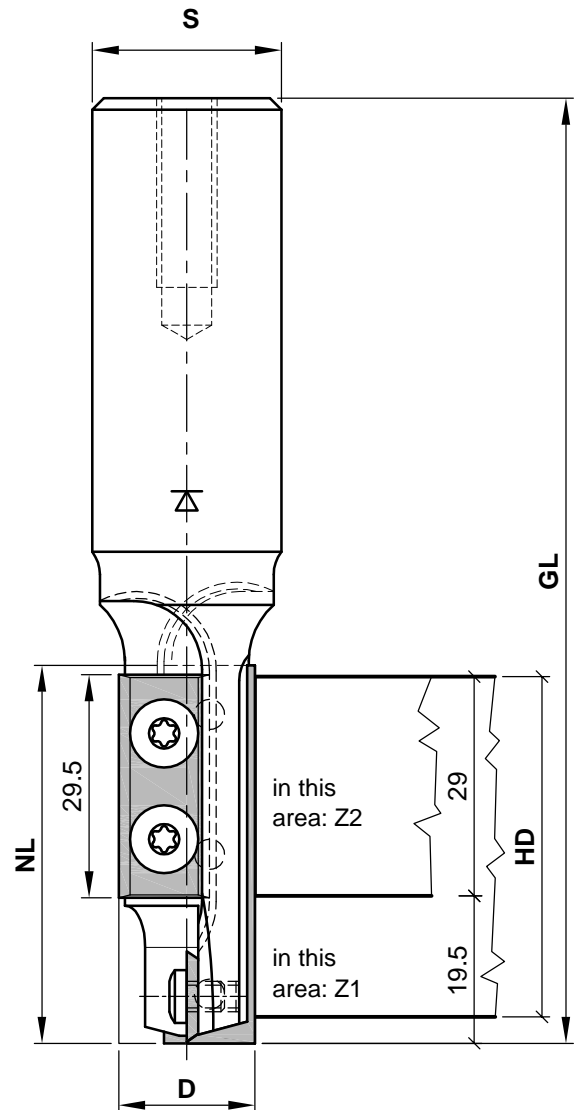
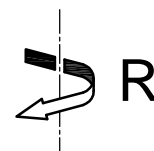
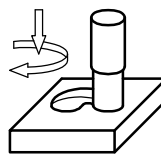
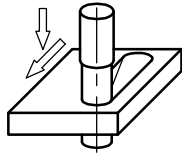
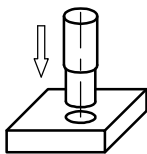
- A continuous reversible blade for joint processing in MDF

Axial plunging

Only to 20mm depth

Plunge milling ("running")

Bore milling ("circular")



D	NL	GL	HD	S	Z	R/L	n max.	Ident-No.
18	50	125	45	25	2	R	24000	C259-185025R
18	50	125	45	25	2	L	24000	C259-185025L
18	50	125	45	20	2	R	24000	C259-185020R
18	50	125	45	20	2	L	24000	C259-185020L

Spare Parts				
Description	Qty.	Dimensions	MBM	Ident-No.
Circumference Cutter long	1	50x12x1.7	10	WMN50x12/U
Circumference Cutter short	1	29.5x12x1.5	10	WMN29.5x12/U
Bore Cutter	1	7.5x12x1.5	10	WMF7.5x12/U
Screw Circumference Cutter	5	M4x5 (head D9) Torx T15	10	KW.44877.5
Screw Bore Cutter	1	M4x5 (head D7) Torx T15	10	KW.44878.5

<p>e-mail: office@aigner-werkzeuge.at www.aigner-werkzeuge.at</p>	MS.....Machine Adaptor	Blattformat: A4	<small>All dimensions in mm</small> Zchnng.-Nr. KW.52084.3 01
	Z.....No. of teeth		
n max.....Maximum Rotational Speed (rpm)	C259		
MBM.....Minimum Order Quantity			