

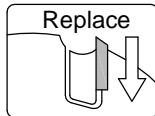
PM-Dovetail-Cutter

C225

Cutting Material
TC

Number of Teeth
Z 2

Feed
MEC



Design:

- Tool body in steel
- No. of teeth = 2
- Shank fit h6

Application:

- For the production of dovetailed joints
For feeds up to 5 m/min

Workpiece material:

- Solid wood and panel materials

Machine:

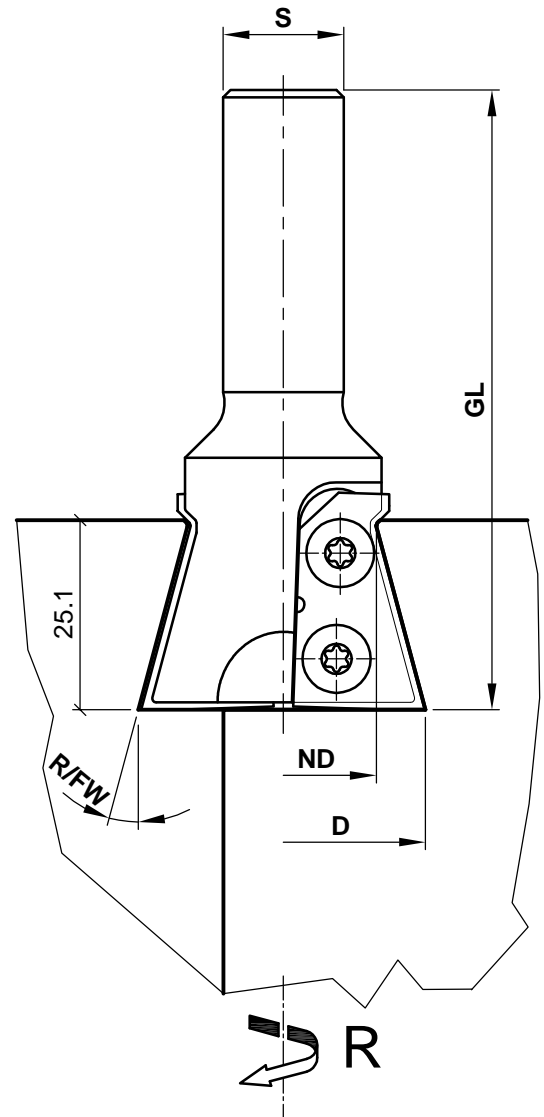
- CNC machining centres

Scope of supply:

- Tool body including profile knives
- Handle key Torx T15
- Optionally also assembled (and balanced) (MI):
Assembled in shrink collet HSK-F 63 (C915): C225-.....-M1
Assembled in collet chuck HSK-F 63 (C910): C225-.....-M2


Special features:

- Dovetail cutter with replaceable cutters (constant diameter)



R/FW	D	ND	GL	S	Z	R/L	n max.	Ident-No.
15°	37.6	24.6	82	16	2	R	15000	C225-164082R

Spare Parts				
Description	Qty.	Dimensions	MBM	Ident-No.
Profile cutter	2	30x20x2.0	2	PM.42399.5/U38
Circumference cutter screw	4	M4x6 Torx T15	10	KW.44237.5

 <p>e-mail:office@aigner-werkzeuge.at www.aigner-werkzeuge.at</p>	MS.....Machine Adapter	Blattformat: A4	<small>All dimensions in mm</small> Zchnng.-Nr. KW.42250.4 00
	Z.....No. of Teeth		
n max.....Max. Speed (rpm)	C225		
MBM.....Minimum Order Quantity			