

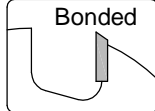
Solid-TC-Countersink 90°

C172

Cutting Material
TC

Number of Teeth
Z 3

Feed
MAN



Design:

- Shank in steel, Tool body in solid TC
- Countersink Z3 TC
- Special geometry for a clean and chatter-free cut section

Application:

- For the subsequent countersinking of previously drilled holes

Workpiece Material:

- Solid wood and panel materials

Machine:

- Through feed drilling lines, CNC machining centres

Scope of Supply:

- Tool assembled with length setting screw
Grub screw ISO 7434
- Setting screw special design for Weeke quick-action drill chucks optionally available
- Optionally also assembled (and balanced) (MS):
Assembled in shrink chuck HSK-F 63 (C915): C172-....-M1
Assembled in collet chuck HSK-F 63 (C910): C172-....-M2

Special Features:

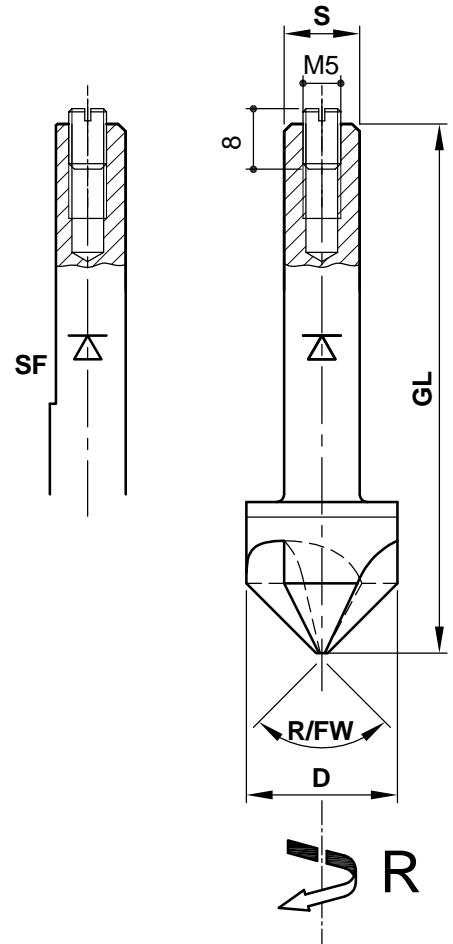
- Clean and chatter-free cut section

Additional Information:

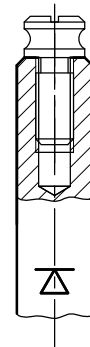
- SF = with clamping surface for drilling units

Application Data:

- Speed n = 1.000 - 4.000 U/min



optionally



R/FW	D	GL	S	Z	R/L	SPFL	DZ	Ident-No.
90°	20	70	10	3	R		1000-4000	C172-2090R
90°	20	70	10	3	L		1000-4000	C172-2090L
90°	20	70	10	3	R	SF	1000-4000	C172-2090SFR
90°	20	70	10	3	L	SF	1000-4000	C172-2090SFL

Spare Parts				
Description	Qty.	Dimensions	MBM	Ident-No.
Length Setting Screw Grub, Screw ISO 7434	1	M5x8	10	KW.45451.5
Setting Screw Special Design	1	M5x17	1	KW.44890.5

<p>e-mail: office@aigner-werkzeuge.at www.aigner-werkzeuge.at</p>	MS.....Machine Adaptor	Blattformat: A4	<small>All dimensions in mm</small> Zchnng.-Nr. KW.41720.4 01
	Z.....No. of Teeth	C172	
DZ.....Speed Range (rpm)			